



Empow'Her Fellowship

Celebrate, connect and support women social entrepreneurs around the globe
who are on a mission to change it!

ABOUT EMPOW'HER

Empow'Her is a social venture working for women's empowerment, creating tools and opportunities for women to thrive as entrepreneurs.

We believe in every woman's right and capacity to improve their own economic status and wellbeing and to participate in and contribute to our societies, as much as we believe in women's capacity to have a social impact

Our trainings and support programs are designed to answer to women's specific needs and are adaptable depending on the context in which we operate.

+ 15 000

**Women entrepreneurs
have been supported in
the development of their
enterprise**

+30

**Countries covered
(Europe, Latin America,
Africa, Asia)**

80%

**Of our entrepreneurs
believe that taking part in
our programs enabled them
to develop their
enterprises.**

WHY CREATING A FELLOWSHIP?

Our history and impact with women social entrepreneurs on a scale-up phase

Empow'Her has supported more than 200 women changemakers in the consolidation of their social projects since 2017 through the various Women'Act paths, in 13 countries:

2017

The Women'Act support program is launched at the **national level** in France, then in Niger and the Ivory Coast.



2020

Regional versions of the Women'Act program allowed to build communities of women social entrepreneurs in Europe and West Africa.



2023

After 14 editions, Empow'Her launches its Fellowship to put its expertise at the service of women social entrepreneurs in **Europe, and in Africa**, in a more sustainable way.

To leverage on our expertise and sustain our support for women with impactful projects, we launched the Empow'Her Fellowship, an initiative to **recognize, connect** and **support** women social entrepreneurs around the globe who are on a **mission to change the world!**

Empow'Her Fellowship

A lifelong community of women building a new world

Empow'Her Fellowship is a lifelong collective of women who are advocating for a more inclusive, feminist and sustainable world", and leaning on Empow'Her's expertise and network to make it a reality.

From the moment you join the Empow'Her Fellowship, you join a community to...



Grow as a leader

Receive 6 months of tailored mentoring to address a burning challenge identified through an in-depth diagnosis.

Benefit from a program of online and ad hoc offline soft-skills training and a set of peer-to-peer support methodologies.



Scale-up your impact

Have access to a program of online training hosted by international experts on specific and technical topics identified during the diagnosis phases.

Benefit from Empow'Her's expertise and network to have access to business opportunities and prepare your applications for funding.

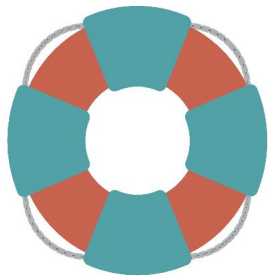


Build new alliances

Have access to Empow'her's international network of experts, partners and events.

Focus on Empow'Her Fellowship

Grow as a leader



Diagnosis and individualized coaching

Each selected entrepreneur benefits from a **in-depth diagnosis** carried out by the Empow'Her teams to **refine her needs** and the areas of development of her project.

This work will allow to **match her with a coach** having a detailed knowledge of the geographical area in which the entrepreneur operates, for 2 monthly hours **during 6 months**.



Access to a program of online masterclasses

Access to a program of **online training** on specific themes, defined according to the **needs of the entrepreneurs** and treated during a meeting, or in the form of longer-term "tracks". This trainings are also open to the entrepreneurs' teams.

Focus on Empow'Her Fellowship

Scale-up and sustain your impact



Connection with the experts of the Empow'Her network

Access on demand to an international **pool of experts** who can provide technical support to the entrepreneurs. This pool is also open to the entrepreneurs' teams.



Support in the production of funding applications

Individualized advice to develop **funding applications** or applications for key calls for proposals/applications.



Yearly project diagnosis

To **assess to progress** and impact of the project, each entrepreneur will benefit of a **yearly diagnosis** to identify the **new needs and challenges** on their entrepreneurial journey.

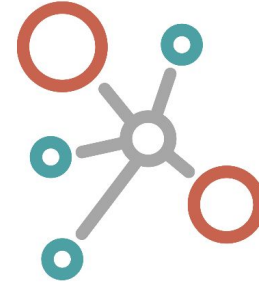
Focus on Empow'Her Fellowship

Build new alliances



Peer-to-peer support

The provision of **collective intelligence formats and methodologies** that women entrepreneurs can use to help each other and grow the collective.



Visibility and network

Access to **training and network development seminars** organized on an ad hoc basis, in conjunction with major regional or **international events**;

Access to **initiatives with a regional or international scope** through the Empow'Her network.

How does the Fellowship work?

The agenda to **grow as a leader**, **scale-up and sustain your impact** and **build new alliances**

Your entrepreneurial life

First
6
months

The rest of your entrepreneurial life

- Diagnosis of your project
- 6-months 1:1 coaching



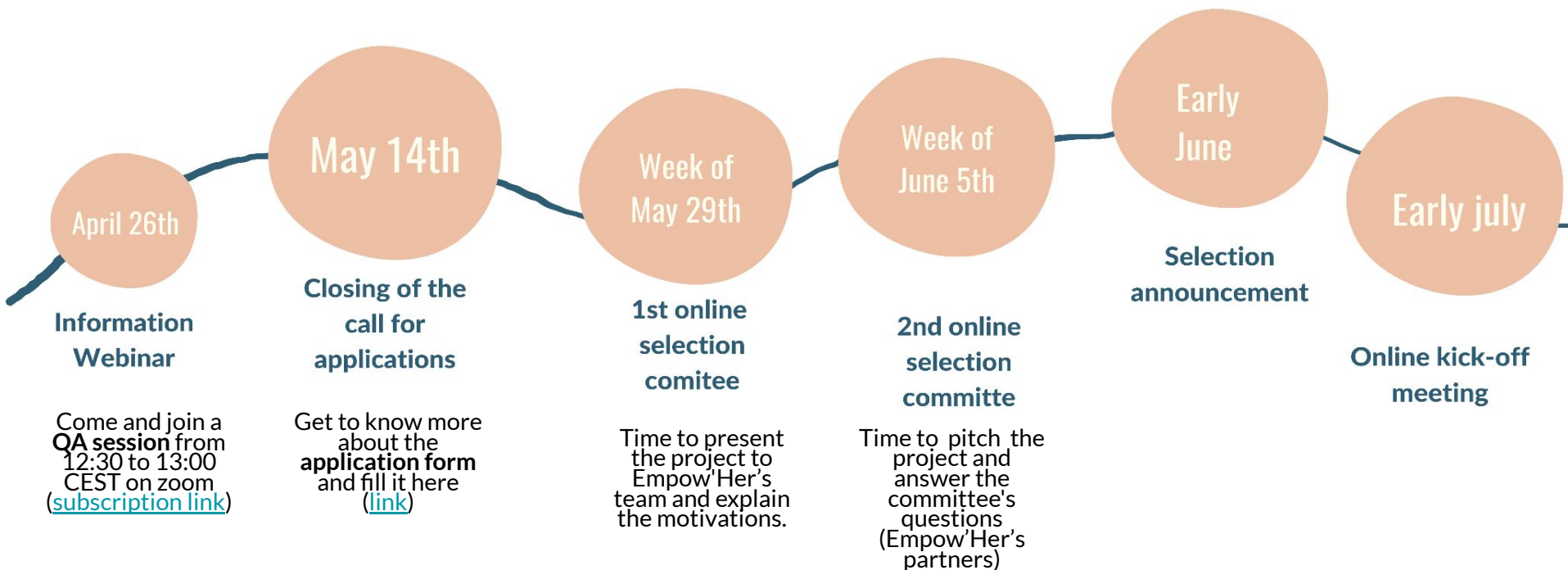
- Access to a database of experts to help you tackle your daily struggles
- Online masterclasses for you and your team
- Yearly diagnosis to assess your progress and new needs
- Online and offline soft-skills training and peer-to-peer support methodologies.
- Support in the production of funding applications
- Access to Empow'her's international network of experts, partners and events



Selection process

The Empow'Her Fellowship brings together women changemakers from Africa and Europe. There are regular calls for applications with a focus on specific countries.

Are you based in France, Germany, Spain or Italy and ready to join? A call for applications is currently open **until 14 May, apply now!**



Empow'Her Fellowship is made for you if...

Selection criteria



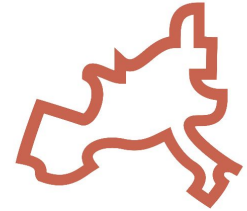
You are a woman entrepreneur with a **scale-up project** that provides a **new vision** of addressing societal or environmental issues



Your **life-mission** is to advocate for a more inclusive, feminist and sustainable world!

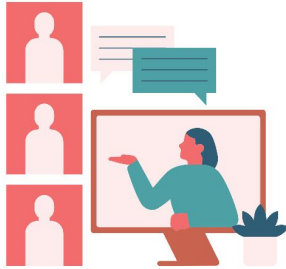


You are interested in receiving support to grow your business and eager to **scale your impact worldwide!**

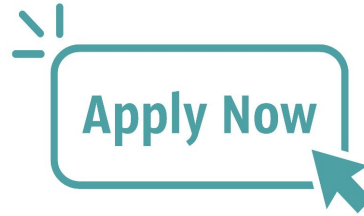


You are established in **France, Germany, Italy or Spain** and are a French and/or English speaker

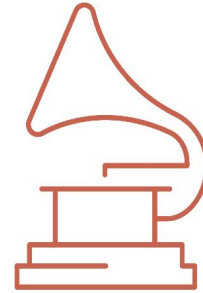
You have all the information you need ! Now it's the time to...



Come to the information webinar on **April 26th** - [Click here for the subscription link](#)



Apply before **May 14th!** - [Click here for the application form](#)



Nominate on LinkedIn a woman changemaker and tag us! - [Click here for our LinkedIn page](#)

CONTACT US

Coline Metge

Social Innovation Projects Officer

coline.metge@empow-her.com

Gabriela Murillo

Social Innovation Projects Assistant

gabriela.murillo@empow-her.com

Discover [Women Act clicking here!](#) It is our other support offer dedicated to impact entrepreneurs

